

An abstract artwork featuring a dark, textured background with vibrant, glowing yellow and green patches. The patches are irregular and appear to be made of fine, fibrous or crystalline material, giving them a three-dimensional, almost organic quality. The overall effect is one of light breaking through a dark, dense medium.

# KIERAN STILES LIGHTSCAPE

14 - 28 SEPTEMBER



Curated by Flora Fairbairn

14 - 28 September  
Thurs - Sat 10am - 5pm  
Sun - Wed By appointment only

Kieran Stiles  
Visiting Fellow In the Creative Arts  
Merton College, Oxford, OX1 4JD

+44 (0)7967 075367  
lightscape.merton@gmail.com



The new *Visiting Research Fellowship in the Creative Arts* was designed by Merton College to initiate synergies between the arts and academia, and to increase the profile of the college as a centre for research and innovation in the arts.

In a world in which our experiences are increasingly governed by external influences, Stiles' research explores the psychological benefits experienced within the autonomy of creativity, and the important role that plays in education and student wellbeing.

Through a series of workshops about light, colour, and form, Stiles has demonstrated how learning through the experience of creative practice can offer new insights into oneself and one's own experience of reality. This can be achieved by investigating philosophical ideas about perception, while developing a painting. As Stiles puts it "Working like this encourages you to paint what you feel and imagine, and not what you know. This can extend your vision beyond conventional realism."

*Lightscape* features a series of paintings inspired by the environment of Merton College which were used to represent visual metaphors during these workshops, each offering new ways to drive the imagination, highlighting the fundamental links between creativity and psychological wellbeing.





1.





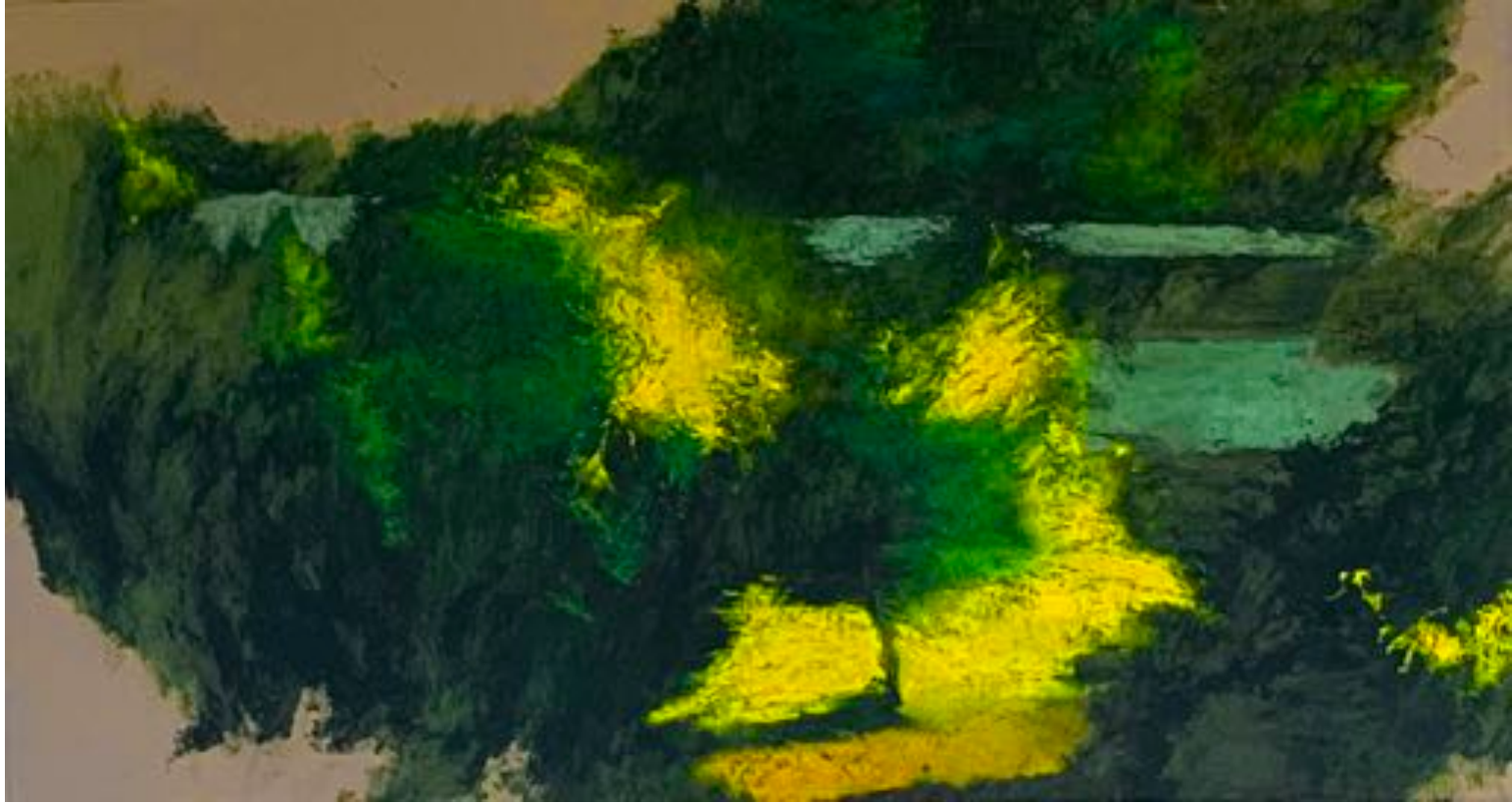
2.





3.





4.





5.





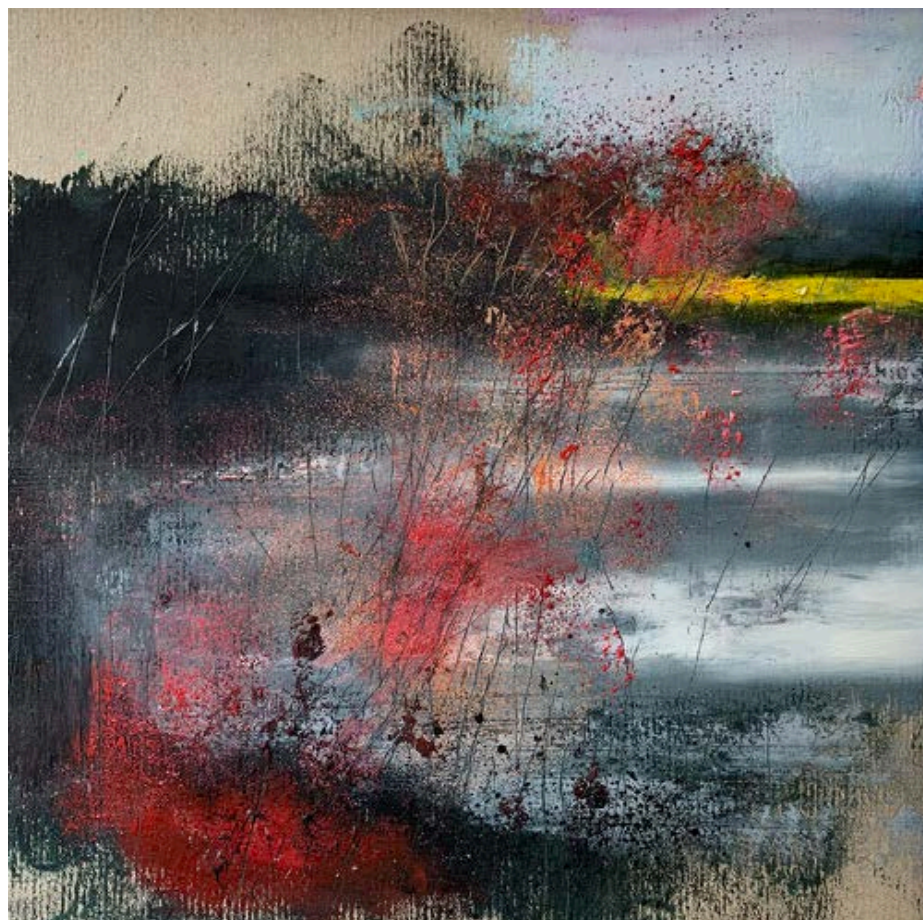
6.





7.





8.





9.





Kieran Stiles working on *Fellows' Garden*



List of works



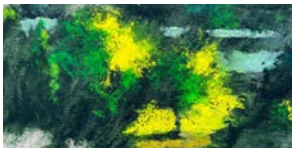
1. *Tamesis* Oil on board 78 x 76 cm



2. *Night Trees* Oil on board 30.5 x 21.4 cm



3. *Reed Bed* Oil on board 20.2 x 25.3 cm



4. *Fellows' Garden* Oil on board 124.5 x 67.6 cm



5. *Kitchen Garden* Oil on board 18.2 x 24.8 cm



6. *Sundial Lawn* Oil on board 23.8 x 24 cm



7. *River Field* Oil on board 20 x 25.8 cm



8. *Water Meadow* Oil on board 18.2 x 18.2 cm



9. *The Grove* Mixed media on paper 23.4 x 17.2 cm



